



Critical Warning



Please be sure that all precautions taken against risks

Do not use your device while it is raining or on extremely wet floor

Turn on your device after you make sure that all parts are in place.

Make sure that the device battery is fully charged before searching

If the battery starts to give a peep sound, close the device and recharge the battery.

It is recommended to read the user manual before start working on the device to understand everything and to avoid mistakes doing the search.

After the device start making a sound and turn off automatically put the device on charge.

Be aware of high voltage resources, and do not use any charger other than the original charger that come with the device

Main unit of the device is under warranty against all electronic breakdowns for two (2) years.

Any damages caused by user errors (laying open the main unit, hits, harms etc.) are not within this warranty.

Battery and the tablet are not within this warranty.

You should follow the instructions in this user manual strictly to minimize the faults and to use your device correctly.

EASY WAY PLUS

3D IMAGING SYSTEM



Overview

- Dear customer, thank you for choosing EASY WAY PLUSE.
- The smallest 3D imaging device with the ability to be hidden completely.
- Specialized in prospecting and searching for burials, caves and cavities in the ground with all confidentiality and ease.



The device components



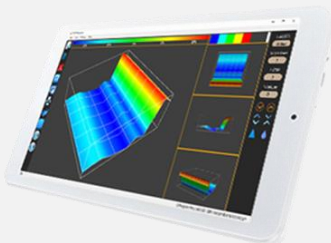
The main unit



Remote control



Sock to carry the device



Tablet



Charger

How to start working

The device has three indicators that must be checked before starting the imaging operation:

-Power indicator: It lights up when the device is turned on.

-Control indicator: It lights up intermittently when the remote control is pressed

-Bluetooth indicator: it lights up when a connection to the tablet device is established.



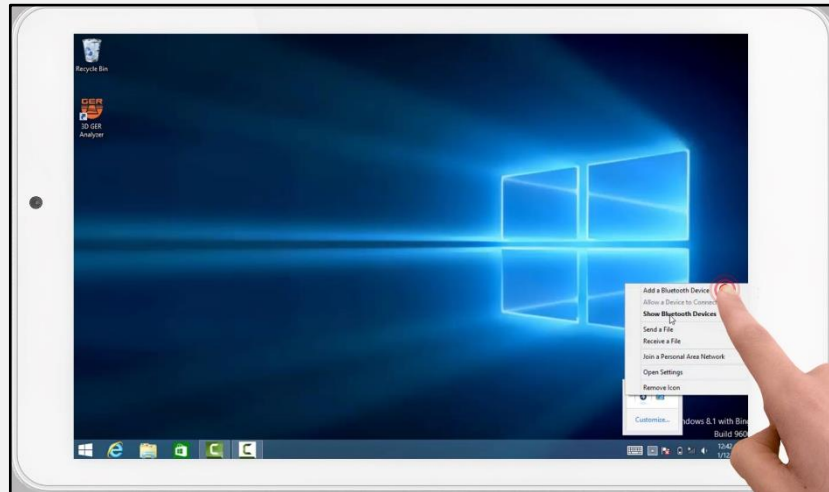
Switch on the device through **ON / OFF** button



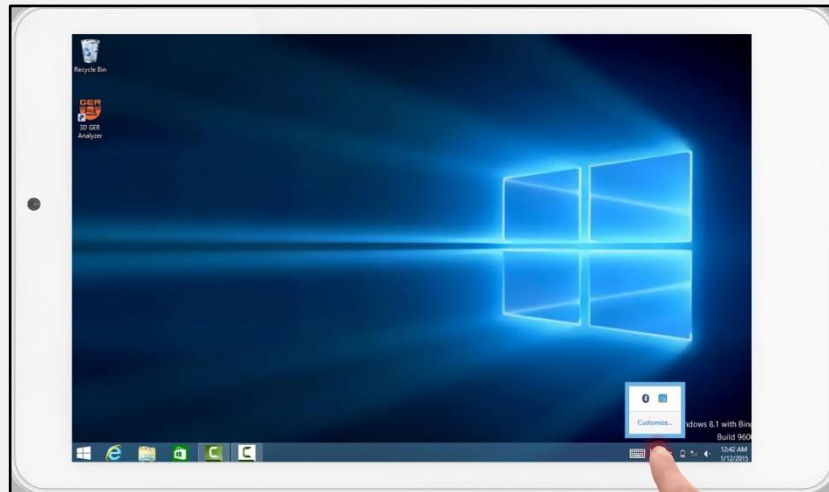
Place the device in its sock
As shown in the picture.



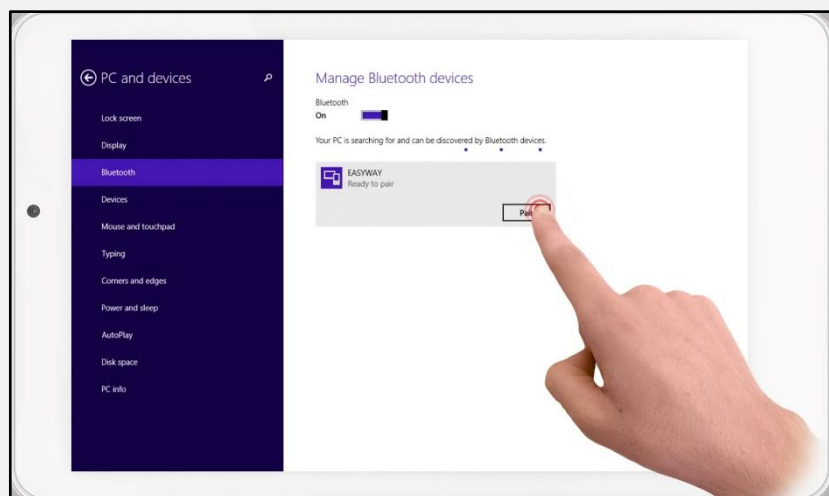
- Turn on the tablet device.
- Then establish a connection between the main unit and the tablet by clicking on the Bluetooth icon located to the right of the taskbar.



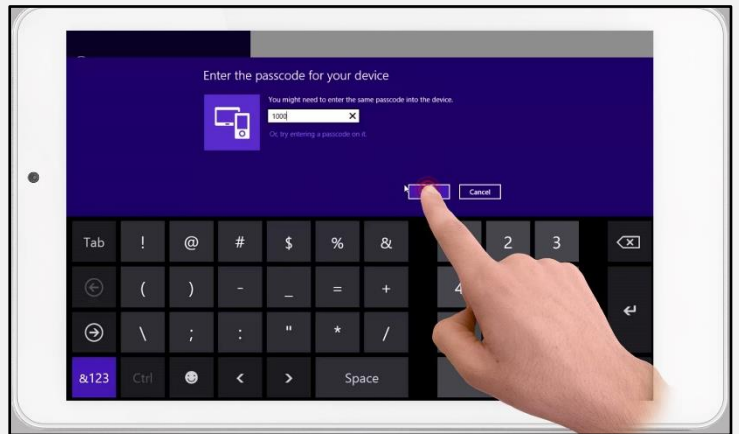
- Select Add Bluetooth device.



- Bluetooth will search for devices near your tablet.
- Then the Easy Way Bluetooth will appear.
- Click on it and then choose "pair"



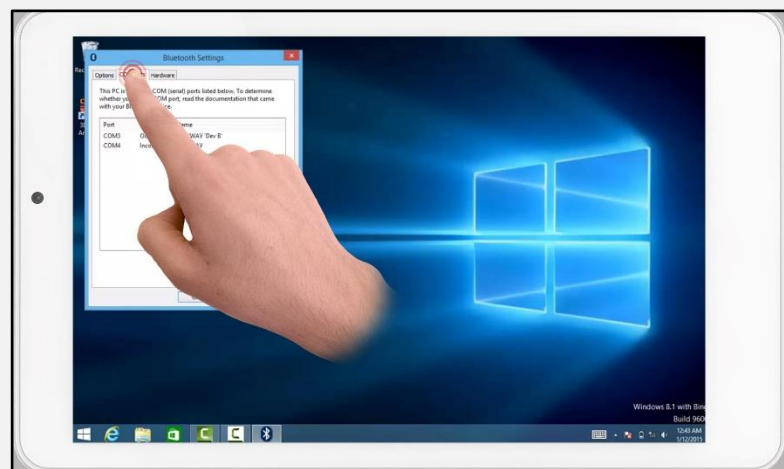
- a window will appear to enter the password which is **"1000"**
- Press the next button to complete the pairing operation between the tablet and the main unit.



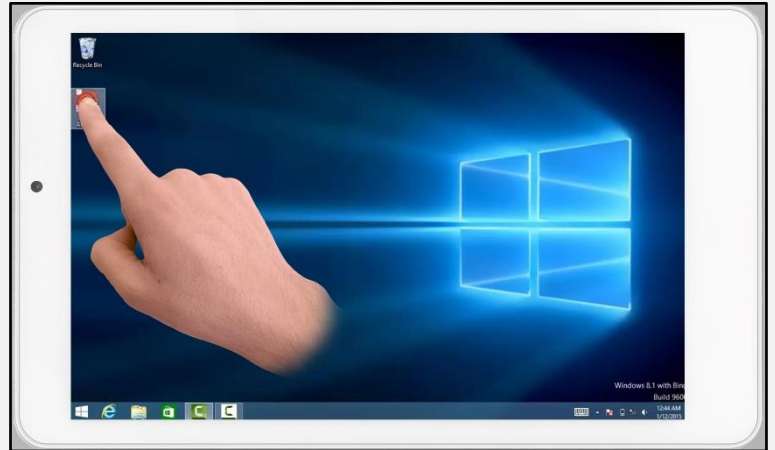
- Click on the Bluetooth icon again and choose **"Open settings"**



- The window for Bluetooth properties will appear.
- Choose **"Com Ports"** to see the outgoing port number which will be used later in the analyzing program.



- Close the window and run 3D GER analyzer



- After opening the program click on the “New scan” icon

a window for adjusting the settings of Imaging will appear, which is as follows:

Choose device: Select device name.

Interface: Enter the outgoing port number obtained from Bluetooth properties already open.

Transmission method: Choose Bluetooth.

Impulses per line: is designed to determine the number of images within a single line.

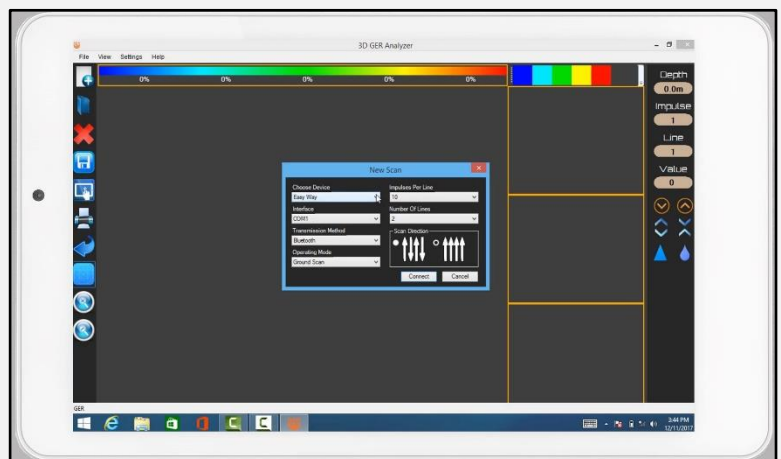
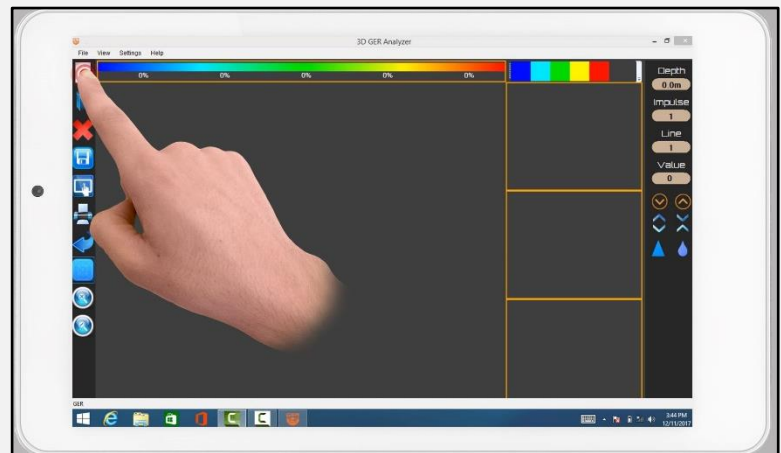
Number of lines: to determine the number of lines to search for.

Scan Direction: is to select the scanning method during imaging.

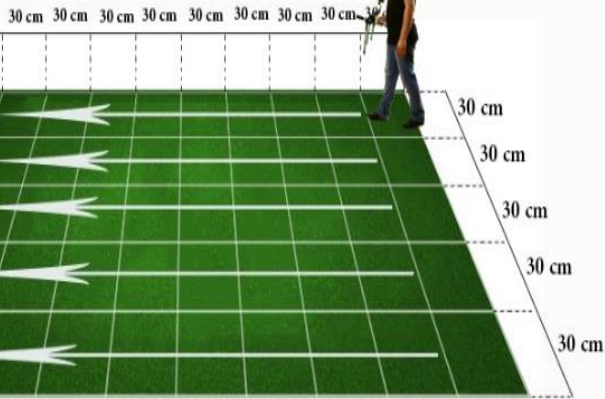
There are two methods for scanning

Either scan in one direction

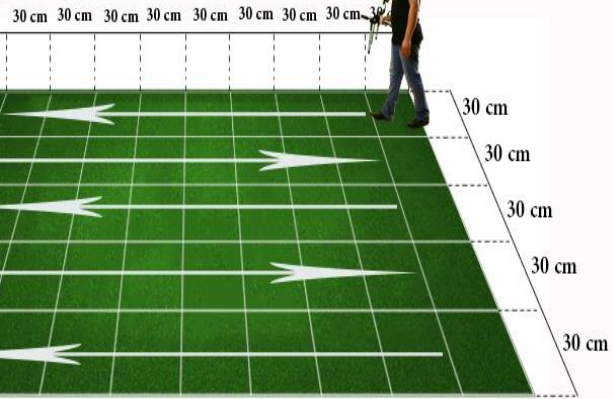
Or two-way scanning, back and forth.



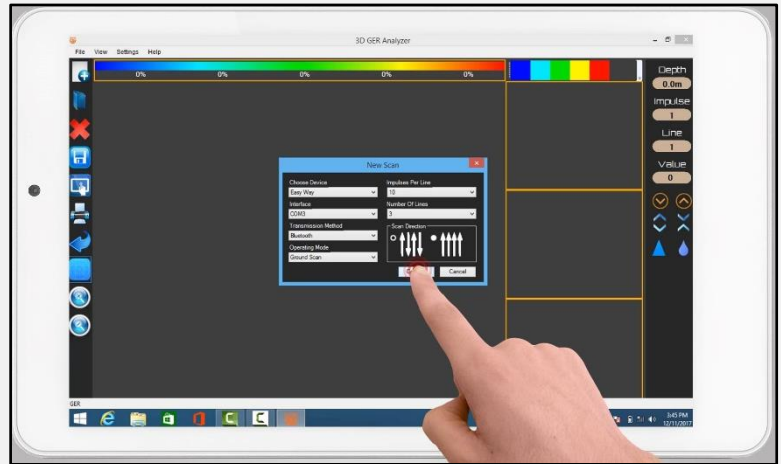
one direction scan



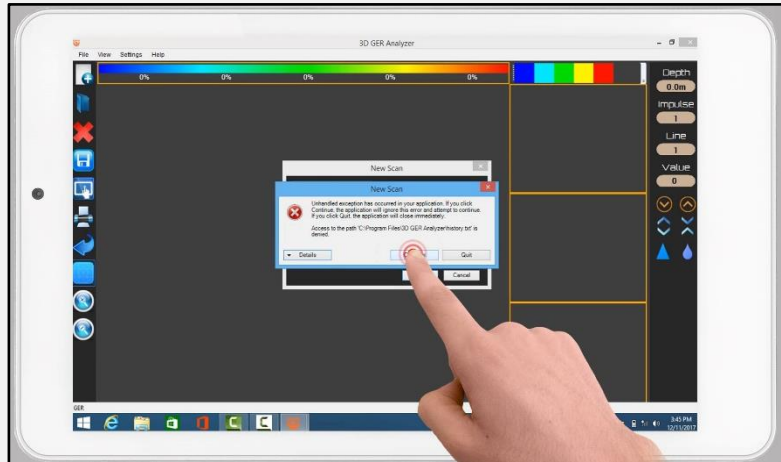
zigzag direction scan



- Click on **“Connect”** to complete the connection process.

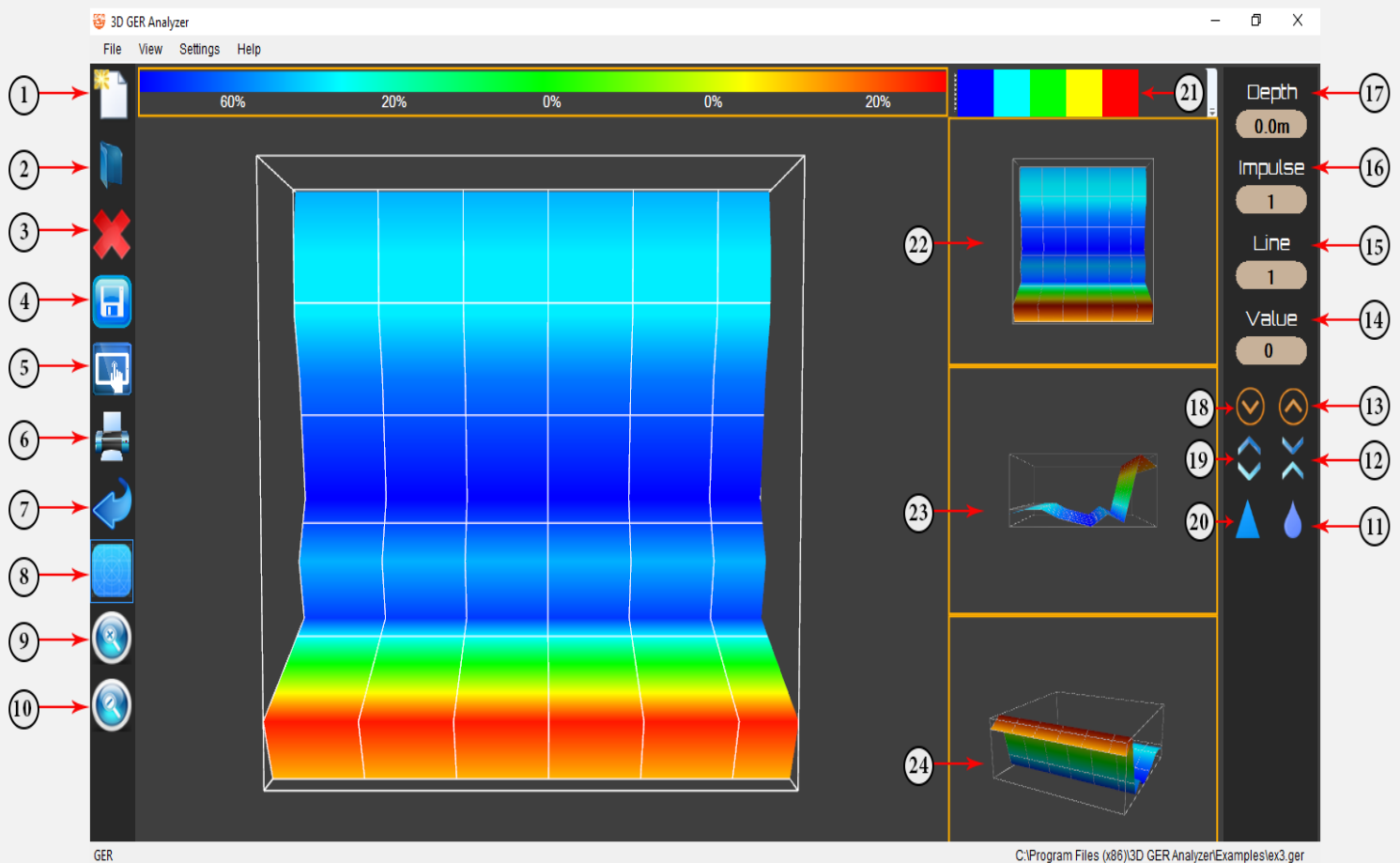


- A warning message will appear, press **“continue”**.

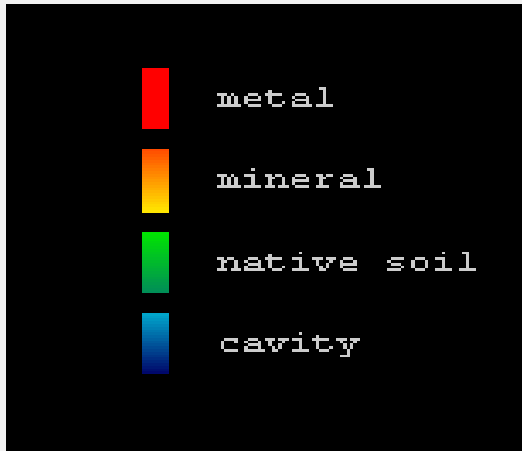


After scanning is complete, we will have a three-dimensional image which is up of a grid of squares reflecting the number of steps and lines that have been scanned.

Example: We have a grid of lines consisting of three columns and ten steps per column, which means three lines of scan, and each line consists of ten images captured.



NO	Explaining: For detailed information for a specific point within any square
1	Start new scan and disconnect after scanning finish
2	Open file from your tablet already existing in your tablet
3	Cancel the scanning or delete the photo
4	Save the photo as a GER file to re-open it any time you want
5	Save as a photo with no option to change anything in the photo shape
6	Print report allowed you to see the where about of the metal and the other elements
7	To return the photo as it is being before you start analyzing
8	To hide and appear the grid which Represent the number of photos in the scan
9	Zoom in to make the picture bigger
10	Zoom out to make the picture smaller
11	A Tool you use it in case of not clear target to see the correct shape (-)
12	to make the target in low size
13	Move up between the grid squares to pin point the area that you want to know its depth
14	The value which will difference between the metals, the cavity and the ground
15	The number of lines that you have been scanning
16	The number of pulses (photos) you have been taking
17	The depth: when you can see the target exact depth
18	Move down between the grid squares to pin point the area that you want to know its depth
19	to make the target in high size
20	A Tool you use it in case of not clear target to see the correct shape (+)
21	These options allowed you to see the target in 2D & 3D shape and you can hide the soil for example or the metals and keep the cavity
22	Another way to see the target from down
23	Another way to see the target from the side
24	Another way to see the target from the angle



Color description

The photo divides into five colors as follows:

Red: It represents different kinds of metals.

Green: It represents the soil.

Yellow: He is a rock and all solids and low frequencies Minerals.

Light blue: the color of the rocks surrounding cavities.

Blue: represents the cavity.

For example, in the previous picture, the cavity represents 60%, soil represents 0%,

(Important note)

As for the values in each photo, they are interpreted as follows:

If there is a difference in values between a photo and a same-color photo following it is large, or if there is any sudden change in value, this indicates that there is an unidentified object (metal or cavity) which can be seen clearly in the photo. For example: We have the following values: **60 - 65 - 75 - 140**, the high-value photo, which is **140** in this example, is conclusive evidence of a real object laying directly underneath.

However, if there a difference in values between an image and another image following it, provided that they are in red, is close without any sudden change in value, this stands as evidence of the nonexistence of any objective but it indicates a significant concentration of mineral salts.

Technical Features

Processor Speed	128Mhz
Battery Charger	220V »»» 15V – 2A
The Device Battery	12V
Communication With The Program	Bluetooth
Tablet Device Driver System	Windows 8.1
Battery Life	6 Hours
Battery Charging Time	3 Hours



Warning

If you want the device work well without errors you have to follow next steps

When using the device please do not wear the watch



When using the device please do not wear the jewelry



When using the device please get away from metal, lighter and mobile phone



Please take off the belt



The shoes should not contain any metal



Stay away from the car



Stay away from electrical ground power lines or any surfacing electric



Thanks for choosing
our products



We wish you the best
of luck in your