

## User's Manual



Gold line user manual

**SHOP DETECTORS**

TEL : +1 206-401-9788

WEB : <https://shopdetectors.com/>

EMAIL : [contact@shopdetectors.com](mailto:contact@shopdetectors.com)



## Metal and Water Finder

Contents .....	Page	1
Safety information .....	Page	2
Technical specification .....	Page	3
Device parts .....	Page	5
Interfaces and components of Device .....	Page	7
Overview .....	Page	8
Assembly .....	Page	10
Setup wizard .....	Page	11
Start searching .....	Page	13
Notes .....	Page	17

# Safety information



The operating in high voltage areas would limit the results and performance



It's better to turn off mobile while using the device.



Don't operate two devices with same method of search at the same place



Don't store in high temperature or high humidity



Disconnect the batteries before long time storage



The operator Must remove any metals that might affect the operation eg: Rings, watch, belt....



Any attempt to tamper the device or unapproved maintenance would void the warranty



For devices that work on replaceable batteries, use good quality batteries to work longer hours.



- ❖ The user must practice before starting the detecting operations and discoveries
- ❖ Store in Cool and dry place 15-40 C 5%-75% humidity



Read & Understand  
The User's manual  
before using this device

Search system :	Built-in ionic and radar search system
Search principle:	Processing the Signal Received level of ionic radiation
Operating processor:	MICROCONTLLER PIC18
Operating frequency:	20 MHz
Power:	two celles lithium 3.7v - 3600 mAh / output 12v
Power consumption:	Maximum of consumption 50 mA
Battery life:	10 work hours
Charger:	9 volt 3A / Charging Time 4 hours
Display Type:	NO
Specialized to detects:	Gold
Targets Discrimination:	NO
Target Selection System:	NO
Depth Search:	12 M
Distance Search:	50 M
Results feedback:	Light,sound and vibration alerts
Bluetooth	NO
Wireless:	NO

Automatic smart guidance system:	No
Voice alerts:	Yes
Vibrating alert:	Yes
Operating temperature:	From -15° C to 60° C
Storage temperature:	From -15° C to 40° C
Humidity:	It can be stored and work in the degree rate of air humidity of level 90%.
Weight:	Compound: 700 g – disjoined in the bag: 1200 g
Dimensions:	35X80X150 mm
Bag dimensions:	130X290X340 mm

## Main Control Unit

The unit is responsible to control of the settings and search options.  
The batteries was built inside it.  
Also it's responsible to issuing the search acoustic , optical and vibrations results.



## Ion and Radar sensor.

This sensor needs to connect into its own entrance at the front of the device by using connectivity socket.



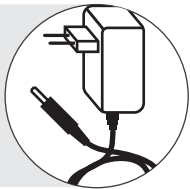
## Hand held

It uses for hold and control the device.  
The hand held has laser button on the front section. and the charging socket at the bottom



## Charger

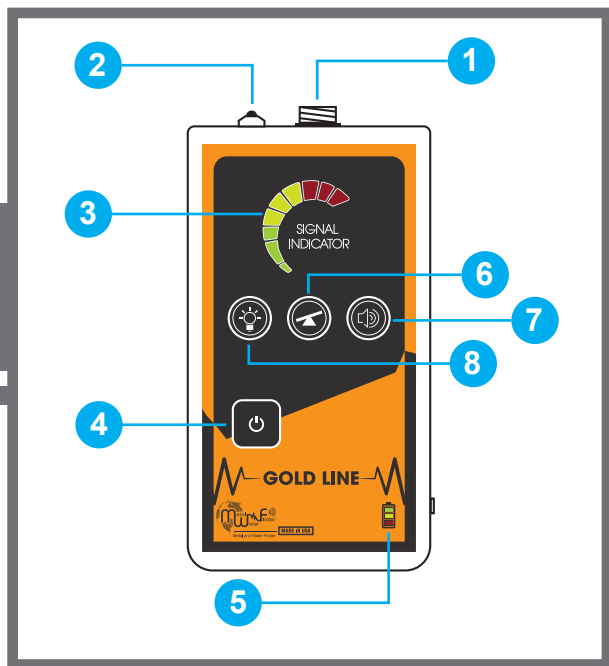
An electric charger to recharge the device's battery  
Values: Input: 240-100VAC / 60-50Hz / 0.4 amps  
Output: 5 volts AC / 3 amp / 15 Watt.



### Headphones

Needs to contact through the headphones jack, who is to the right side of the device.





1 Ionic sensor input

2 Night light

3 Visual signal indicator

4 ON/OFF key

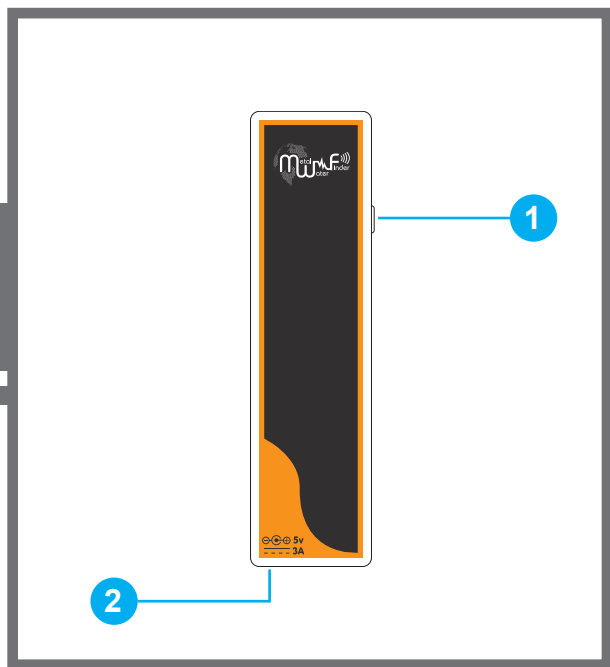
5 Battery indicator

6 Ground calibration button

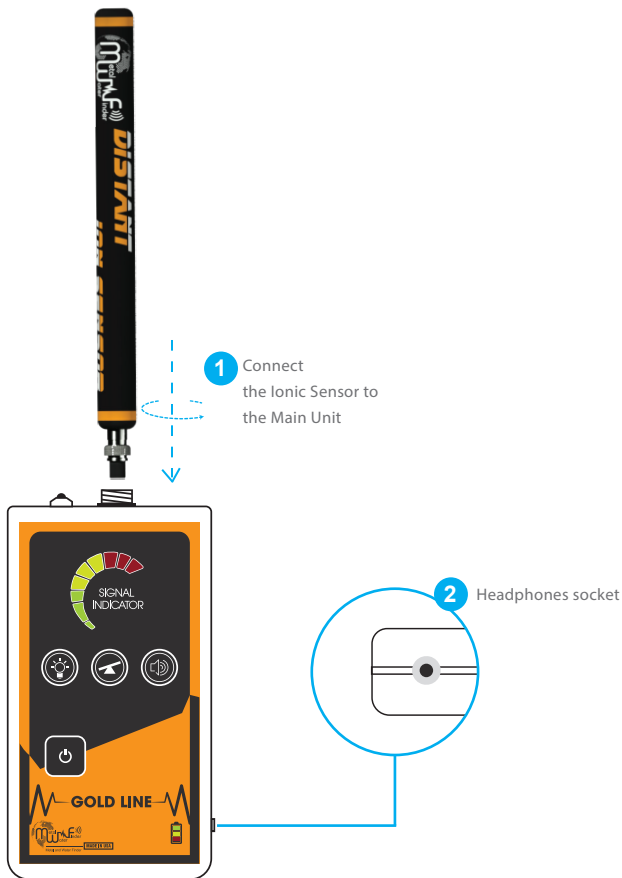
7 Volume button

8 LED button





- 1 laser button
- 2 Charge socket





Power button: Press and hold to turn on the unit after switching the power switch ON.



LED flashlight button: press the button to turn the flashlight in the front of the unit for ease of use in night. Keep in mind that working with flashlight increases the power consumption and therefore less working hours.



Volume button: press the button to select the sound level



Ground calibration key: With this key, the user can adjust the unit to adapt to the terrain and environment in which the device operates. The device gives the normal and stable adjustment of the search tool for better results.

Note: We may start searching in an area where the device is issuing a signal in general

We press the calibrate key once and wait for the signal to stabilize

If this continues to sound in any direction we press the key again until we get a stable result and then go to the search area to determine the targets.

There are three levels to adjust the calibration if the device is not calibrated. You are located in areas where there is high noise from high voltage, etc.

## Starting

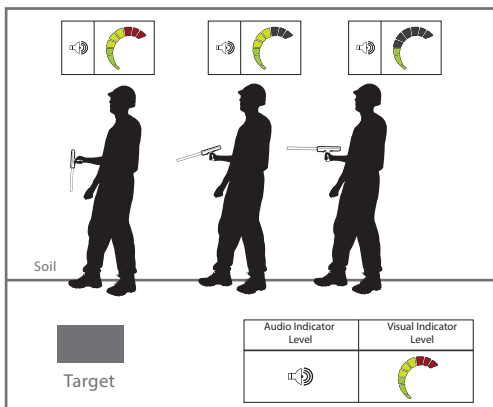
To use the Verification Unit, first move away from suspected target location and calibrate the device by pressing the balance button, then start moving around the target location. The unit will react according to the target ionic field indicating sound and visual signals. The signal will increase when the unit is near the target.

### Note:

The ionic field intensity depends on the metal type and the period that been underground.

### Note:

The approximate depth of the target can be determined by using this unit. After the target point is determined, direct the target to the target and walk in any direction until the acoustic indicator is disconnected. We measure the distance from this point to the target point, which is the approximate distance to the depth of the target.



## Caution



- Charge the battery immediately after use.
- When the battery is full disconnect the charger.
- Only use the charge adapter that is attached with the product.
- Charge and store the unit away from flammable objects.
- Turn the unit off after use and don't leave it idle.

### Battery Status while charging

Description	LED Indicator
Flashing Red: The battery is starting to charge in first stage	
The red indicator stops flashing and the yellow start to flash indicating the start of the second stage of the charging process	
The yellow indicator stops flashing and the green start to flash indicates the third and final stage of the charge process	
All lights on full battery charge achieved disconnect the charger	

### Battery Status while working

Description	LED Indicator
Battery at 100%	
Battery at 50%	
Battery at 25%	
Flashing Red: The battery is low and the unit will shut-down automatically	

Charge Adapter for the Verification Unit :5V DC / 3-A 15W

A series of 20 horizontal dotted lines for writing notes.

SHOP DETECTORS  
TEL : +1 206-401-9788  
WEB : <https://shopdetectors.com/>  
EMAIL : [contact@shopdetectors.com](mailto:contact@shopdetectors.com)



#### **United States of America - illinois**

[www.mwf-usa.com](http://www.mwf-usa.com)  
[info@mwf-usa.com](mailto:info@mwf-usa.com)  
+1 ( 708 ) 364 9602

#### **Turkey - istanbul**

[www.mwf-metaldetectors.com](http://www.mwf-metaldetectors.com)  
[info@mwf-metaldetectors.com](mailto:info@mwf-metaldetectors.com)  
+90 ( 212 ) 222 0946  
+90 ( 212 ) 222 0947